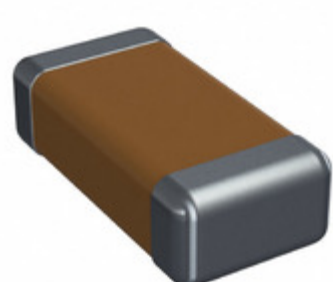


# 12067A101KAT2A



**Part Number:** [12067A101KAT2A](#)  
**Manufacturer:** [AVX Corporation](#)  
**Description:** CAP CER 100PF 500V NP0 1206  
**Data sheet:** [PDF Ceramic Chip Capacitor Catalog](#)  
[PDF C0G\(NP0\) Dielectric](#)  
[PDF Part Number Explanation](#)

**RoHS Status:** Lead free / RoHS Compliant  
**Ship From:** Hong Kong  
**Shipment Way:** DHL/Fedex/TNT/UPS/EMS

Images are for reference only.  
 See Product Specifications for product details.  
**Buy 12067A101KAT2A with confidence from Component-World.HK, 1 Year Warranty**

[Request For Quotation](#)

## PRODUCT PARAMETER

<b>Part Number</b>	12067A101KAT2A	<b>Manufacturer</b>	<a href="#">AVX Corporation</a>
<b>Description</b>	CAP CER 100PF 500V NP0 1206	<b>Lead Free Status / RoHS Status</b>	Lead free / RoHS Compliant
<b>Quantity Available</b>	300838 pcs	<b>Data sheet</b>	<a href="#">Ceramic Chip Capacitor Catalog</a> <a href="#">C0G(NP0) Dielectric</a> <a href="#">Part Number Explanation</a>
<b>Category</b>	<a href="#">Capacitors</a>	<b>Voltage - Rated</b>	500V
<b>Tolerance</b>	±10%	<b>Thickness (Max)</b>	0.037" (0.94mm)
<b>Temperature Coefficient</b>	C0G, NP0	<b>Size / Dimension</b>	0.126" L x 0.063" W (3.20mm x 1.60mm)
<b>Series</b>	-	<b>Ratings</b>	-
<b>Packaging</b>	Tape & Reel (TR)	<b>Package / Case</b>	1206 (3216 Metric)
<b>Operating Temperature</b>	-55°C ~ 125°C	<b>Mounting Type</b>	Surface Mount, MLCC
<b>Moisture Sensitivity Level (MSL)</b>	1 (Unlimited)	<b>Manufacturer Standard Lead Time</b>	28 Weeks
<b>Lead Style</b>	-	<b>Lead Spacing</b>	-
<b>Lead Free Status / RoHS Status</b>	Lead free / RoHS Compliant	<b>Height - Seated (Max)</b>	-
<b>Features</b>	-	<b>Failure Rate</b>	-
<b>Detailed Description</b>	100pF ±10% 500V Ceramic Capacitor C0G, NP0 1206 (3216 Metric)	<b>Capacitance</b>	100pF
<b>Applications</b>	General Purpose		

Component-World.com is a Reliable Stocking Distributor of Electronic Components. We specialize in all AVX Corporation series electronic components. We have 300838 pieces of AVX Corporation 12067A101KAT2A in stock available now. Request a quote from electronics components distributor at Component-World.com, our sales team will contact you within 24 hours.

RFQ Email: [info@Components-World.com](mailto:info@Components-World.com)

## RELATED PRODUCTS

	<b>Part#:</b> <a href="#">12067A120JAT2A</a> <b>Description:</b> CAP CER 12PF 500V NP0 1206	<b>Manufacturers:</b> <a href="#">AVX Corporation</a>	<a href="#">RFQ</a>
	<b>Part#:</b> <a href="#">12067A100GAT2A</a> <b>Description:</b> CAP CER 10PF 500V NP0 1206	<b>Manufacturers:</b> <a href="#">AVX Corporation</a>	<a href="#">RFQ</a>
	<b>Part#:</b> <a href="#">12067A0R5BAT2A</a> <b>Description:</b> CAP CER 0.5PF 500V NP0 1206	<b>Manufacturers:</b> <a href="#">AVX Corporation</a>	<a href="#">RFQ</a>
	<b>Part#:</b> <a href="#">12067A121GAT2A</a> <b>Description:</b> CAP CER 120PF 500V NP0 1206	<b>Manufacturers:</b> <a href="#">AVX Corporation</a>	<a href="#">RFQ</a>
	<b>Part#:</b> <a href="#">12067A101MAT2A</a> <b>Description:</b> CAP CER 100PF 500V NP0 1206	<b>Manufacturers:</b> <a href="#">AVX Corporation</a>	<a href="#">RFQ</a>
	<b>Part#:</b> <a href="#">12067A100KAT2A</a> <b>Description:</b> CAP CER 10PF 500V NP0 1206	<b>Manufacturers:</b> <a href="#">AVX Corporation</a>	<a href="#">RFQ</a>
	<b>Part#:</b> <a href="#">12067A120GAT2A</a> <b>Description:</b> CAP CER 12PF 500V C0G/NP0 1206	<b>Manufacturers:</b> <a href="#">AVX Corporation</a>	<a href="#">RFQ</a>
	<b>Part#:</b> <a href="#">12067A100MAT2A</a> <b>Description:</b> CAP CER 10PF 500V NP0 1206	<b>Manufacturers:</b> <a href="#">AVX Corporation</a>	<a href="#">RFQ</a>
	<b>Part#:</b> <a href="#">12067A150FAT2A</a> <b>Description:</b> CAP CER 15PF 500V NP0 1206	<b>Manufacturers:</b> <a href="#">AVX Corporation</a>	<a href="#">RFQ</a>
	<b>Part#:</b> <a href="#">12067A102JAT4A</a> <b>Description:</b> CAP CER 1000PF 500V NP0 1206	<b>Manufacturers:</b> <a href="#">AVX Corporation</a>	<a href="#">RFQ</a>
	<b>Part#:</b> <a href="#">12067A101JAT2A</a> <b>Description:</b> CAP CER 100PF 500V C0G/NP0 1206	<b>Manufacturers:</b> <a href="#">AVX Corporation</a>	<a href="#">RFQ</a>
	<b>Part#:</b> <a href="#">12067A121JAT2A</a> <b>Description:</b> CAP CER 120PF 500V NP0 1206	<b>Manufacturers:</b> <a href="#">AVX Corporation</a>	<a href="#">RFQ</a>
	<b>Part#:</b> <a href="#">12067A100JAT4A</a> <b>Description:</b> CAP CER 10PF 500V C0G/NP0 1206	<b>Manufacturers:</b> <a href="#">AVX Corporation</a>	<a href="#">RFQ</a>
	<b>Part#:</b> <a href="#">12067A120GAT4A</a> <b>Description:</b> CAP CER 12PF 500V C0G/NP0 1206	<b>Manufacturers:</b> <a href="#">AVX Corporation</a>	<a href="#">RFQ</a>
	<b>Part#:</b> <a href="#">120679-2</a> <b>Description:</b> Z-PACK HS3 HDR ASSY 6R 60P FT	<b>Manufacturers:</b> <a href="#">Agastat Relays / TE Connectivity</a>	<a href="#">RFQ</a>
	<b>Part#:</b> <a href="#">12067A101JA12A</a> <b>Description:</b> CAP CER 100PF 500V NP0 1206	<b>Manufacturers:</b> <a href="#">AVX Corporation</a>	<a href="#">RFQ</a>
	<b>Part#:</b> <a href="#">12067A150GAT2A</a> <b>Description:</b> CAP CER 15PF 500V NP0 1206	<b>Manufacturers:</b> <a href="#">AVX Corporation</a>	<a href="#">RFQ</a>
	<b>Part#:</b> <a href="#">12067A100JAT2A</a> <b>Description:</b> CAP CER 10PF 500V C0G/NP0 1206	<b>Manufacturers:</b> <a href="#">AVX Corporation</a>	<a href="#">RFQ</a>
	<b>Part#:</b> <a href="#">12067A101GAT2A</a> <b>Description:</b> CAP CER 100PF 500V NP0 1206	<b>Manufacturers:</b> <a href="#">AVX Corporation</a>	<a href="#">RFQ</a>
	<b>Part#:</b> <a href="#">12067A121KAT2A</a> <b>Description:</b> CAP CER 120PF 500V NP0 1206	<b>Manufacturers:</b> <a href="#">AVX Corporation</a>	<a href="#">RFQ</a>

## Related keywords for 12067A101KAT2A

<a href="#">AVX Corporation 12067A101KAT2A</a>	<a href="#">12067A101KAT2A distributor</a>	<a href="#">12067A101KAT2A supplier</a>	<a href="#">12067A101KAT2A price</a>
<a href="#">12067A101KAT2A download datasheet</a>	<a href="#">12067A101KAT2A datasheet</a>	<a href="#">12067A101KAT2A stock</a>	<a href="#">buy 12067A101KAT2A</a>
<a href="#">AVX Corporation 12067A101KAT2A</a>	<a href="#">AVX Corporation [MIL] 12067A101KAT2A</a>		